

INDIA

ENTRY PROTOCOL

Guidelines for International Arrivals

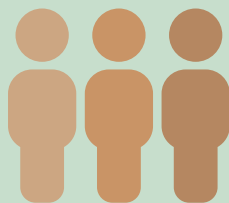
Updated 15th November 2021



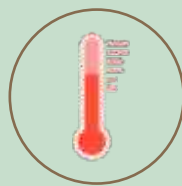
Essential Documents (prior to boarding)

- Submit self-declaration on online [Air Suvidha](#)
- Upload negative RT-PCR test (taken 72 hrs prior)
- Self declaration on authenticity of RT-PCR report
- Undertaking through concerned airline to abide by govt. regulations
- **Download** Arogya Setu app on mobile

International Arrival at port of entry



Thermal checks at the port of entry. Self declaration form filled online to be shown to airport health staff.



Asymptomatic :
To continue as per itinerary.

To know about the mutual vaccine agreements with India for respective countries, please refer to link [here](#) (subject to change).



Symptomatic : To be isolated in a medical facility followed by RT-PCR Test. If positive, contacts will be identified & managed as per government protocols. All arrangements on hold.

- ✓ All travelers, regardless of age, must present an original COVID-19 vaccination certificate indicating full vaccination completed at least 15 days prior to arrival.
- ✓ Children below 5yr of age are exempted from both pre and post arrival testing. If found symptomatic for Covid-19 on arrival or during home quarantine, they shall undergo testing and treated as per laid down protocol.
- ✓ Check that your travel insurance covers Covid-19 related treatment.



Mask Up



Respect norms



Distance



Wash Up

Safety in destination:

- Mask up: we encourage you to bring your own masks; a supply will be on hand where needed.
- Clean your hands frequently with soap & water or alcohol based hand-rub.
- If you begin to feel unwell at any point during your journey, please isolate yourself & inform your guide and seek medical attention at the earliest.
- All protocols are subject to change in accordance with relevant guidelines, local regulations.



At departure:

- Before leaving India, verify that you meet the entry requirements for your next destination.
- All travelers must carry a negative PCR report from a certified designated laboratory issued not more than 72hr before departure- certificate must have QR code with date and time stamp of sample collection.
- We will facilitate required in-country testing for travel between countries and returning home. The current cost for local testing varies by location and ranges from USD 10-15 (subject to change) and can be paid by card or equivalent local currency. Results are provided within 24hr.

Important government website links :

- [Ministry of Health & Family Welfare](#)
- [Air Suvidha](#)
- [My Gov Website](#)

